

MARTINÍK

ADVOKÁTNÍ KANCELÁŘ

PRIVATEUM GLOBAL

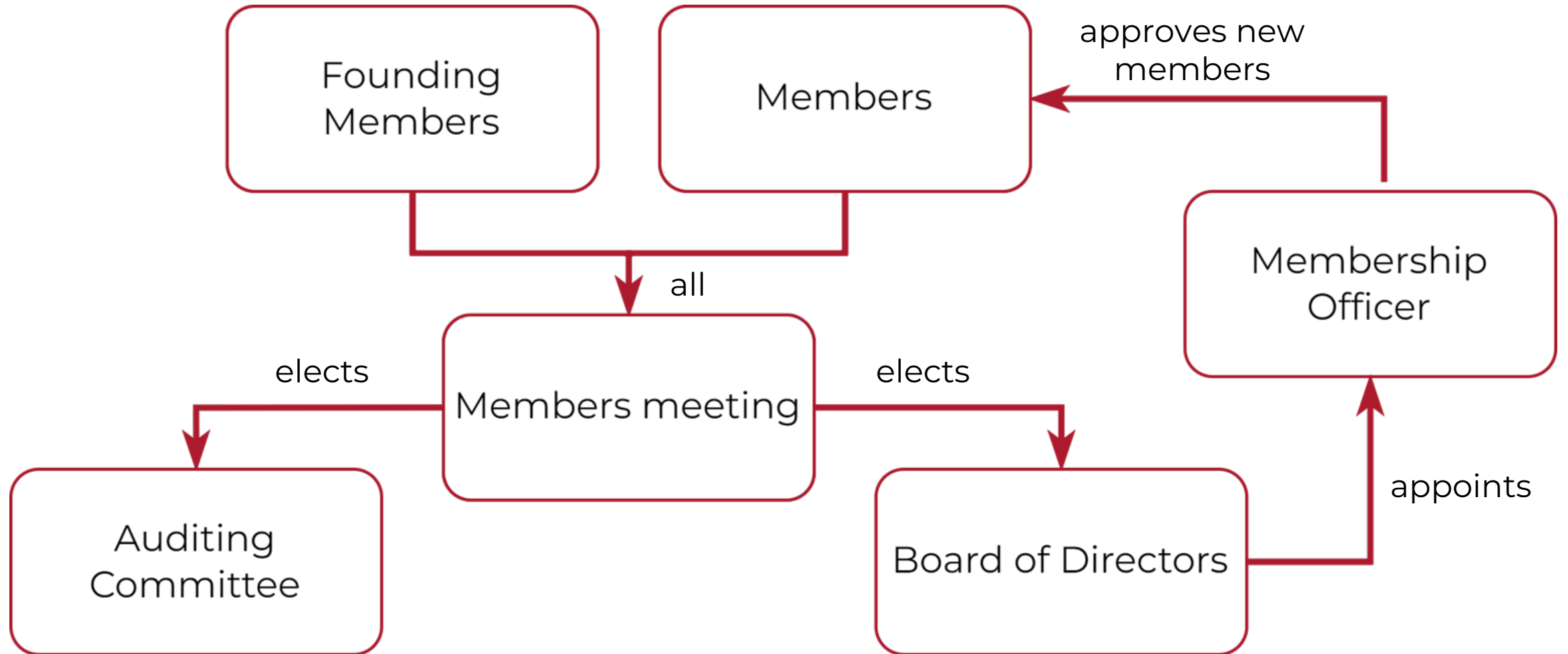
Cooperative and the Process to Become a Shareholder

Mgr. Bc. Pavel Martiník

COOPERATIVE PRIVATEUM GLOBAL

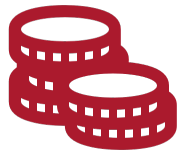
- cooperative under Czech law („družstvo“)
- limited **number** of shareholders (80 000 000)
- being a member/shareholder is completely **voluntary**
- its goal is the **mutual support** of its members
- the support consists of exchange of goods and provision of services

Organization



Decision making

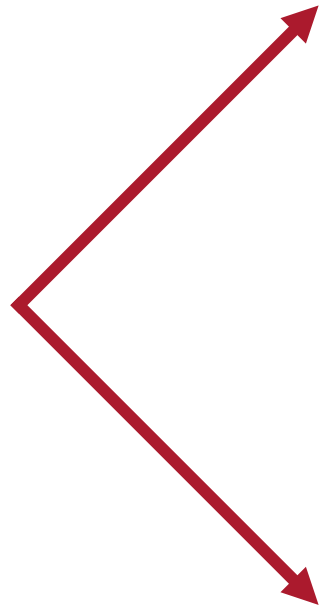
- For the majority of the decisions made by the Members meeting, **every shareholder has the number of votes equal to the number of whole PRI tokens they hold**



e.g. 5,5 PRI = 5 votes

- The Founding Members hold 1 000 000 votes in these decisions
- In the remaining decisions, both Founding Members and Members have 1 vote

How can I become a **member**?



Acquire a Privateum Wallet from another shareholder associating the PRI token with the cooperative and become a shareholder

Own a PRI Token and apply to become a new shareholder

Conditions for becoming a member

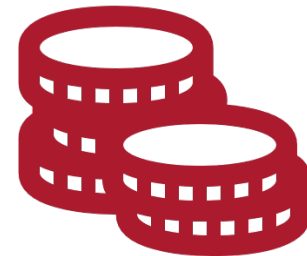
- Own at least 1 PRI
- Apply for membership
- or
- Acquire a Privateum Wallet from another shareholder associating the PRI token with the cooperative and become a shareholder

New membership process



The Privateum Crypto Token (PRI)

- a crypto (utility) token allowing its owners to access the PRI platform
- secure transactions across a global network
- grants access to the PRI network

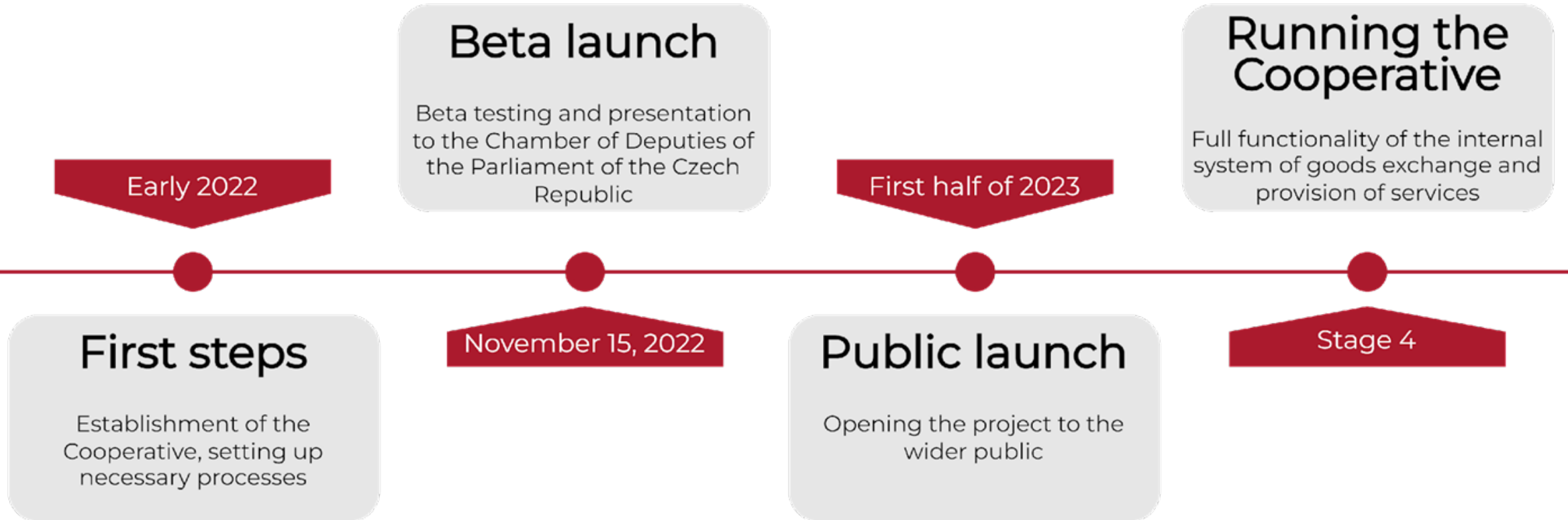


Remarks

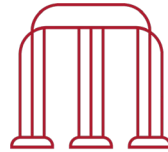
- possession of less than 1 PRI Token will result in **immediate expulsion** from the cooperative
- it is possible to own and trade PRI Tokens without being a shareholder in the cooperative, but **shareholder status** is **unattainable** without them



Timeline



Questions?



MARTINÍK

ADVOKÁTNÍ KANCELÁŘ

Thank you for your
attention